



## Your partner for calibration of dynamic measurement sensors

- ✓ Services in accredited A2LA laboratory
- ✓ Qualified advice and short lead time
- ✓ Traceable calibration with lowest measurement uncertainty

Precision Labs is an ISO 17025 calibration services laboratory accredited by A2LA. We provide vibration and **shock calibration services for all accelerometers and associated electronics from any manufacturer**, along with sound pressure level calibrations for acoustic sensors and calibrators as well as angular velocity and acceleration calibrations for rate sensors and angular accelerometers. Our calibrations are **traceable to the National Institute of Standards and Technology (NIST)**.



Vibration frequency range:  
0.1 to 50,000 Hz



Sine, Multi-Sine,  
FFT



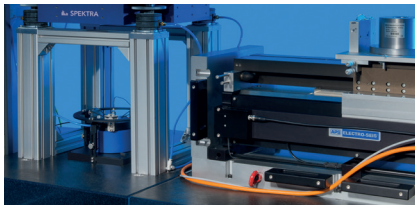
Shock to  
10,000 g



Acoustic to 124 dB  
and 16,000 Hz



Dynamic rotation:  
Factory calibration of IMU



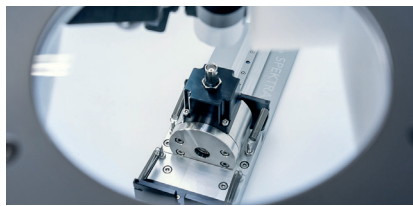
### Vibration & Shock

#### Scope of services:

- Low frequency vibration calibration
- Comparison calibration on single axis or triaxial
- Comparison calibration with resonance
- Shock calibration
- OEM recalibration
- System sensitivity measurement and adjustment

#### Test equipment:

- Sensors
- Measuring instruments
- Analyzers
- Calibrators



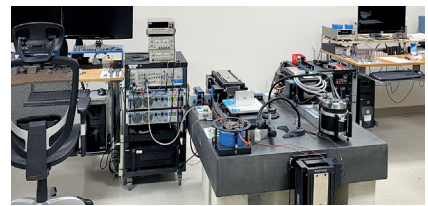
### Acoustics

#### Scope of services:

- Sound pressure level calibration
- Free-field calibration
- Pressure calibration in an electro-acoustic coupler
- Two-point pressure calibration with pistonphone and calibrator

#### Test equipment:

- Sound level meters
- Measuring microphones
- Calibrators
- Pistonphones



### We can calibrate a wide range of accelerometers

- Piezoelectric (PE) - High impedance capacitive charge type
- Piezoresistive (PR) - Bridge circuit type
- Voltage mode (IEPE) - Integral electronics piezoelectric
- Variable Capacitance (VC)
- Single axis and multiple axes
- Digital sensors, wireless sensors

Furthermore, we offer **secondary factory calibration of dynamic acceleration (sine) and dynamic angular velocity (sine)** for Inertial Measurement Units.

Precision Labs is a services laboratory specializing in the **calibration of dynamic measurement sensors**. Using state-of-the-art vibration, shock, and acoustic calibration equipment, we offer quality calibration services at great value with excellent customer service.

**Contact us and make an appointment now!**

**Precision Labs**  
32124 Paseo Adelanto, Ste 3  
San Juan Capistrano  
CA 92675 USA

Phone: (949) 606-4780  
Email: sales@plcal.com  
www.plcal.com